



MAKE ROOM FOR TOMORROW.

Migrate inactive data to cost effective archive storage with Archiware P5 Archive.



P5 Archive is a long-term storage solution that moves data to disk, tape and the cloud.

P5 can be set up within minutes, and works cross platform on Mac, Linux, Windows, FreeBSD, Synology, QNAP and NETGEAR. You can restore data on any platform since P5 stores it in a platform-neutral format.

Media Archiving Software

The software's browser-based interface enables fast and easy configuration, administration and monitoring – regardless of your location.

P5 Archive helps to move data to cost-effective tape media. In the process, expensive server storage can be reclaimed while backup times are reduced. By relieving your network of traffic, you'll get a better working experience and increased productivity.

Archiving is possible to Amazon S3, Amazon Glacier, Google Cloud, Hitachi S3, Microsoft Azure, Wasabi S3, Backblaze B2 and Generic S3. Access to Wasabi storage is built-in to P5. Manual configuration of the Wasabi endpoint DNS names is not required. Archiving to the cloud saves hardware and administration cost, plus the available storage can be easily extended when the need arises.

As users requirements grow and change, P5's modular design allows for optimal scaling to fit your specific needs. There are no limits to possible growth: you can easily add further Archiware products, hardware or media to expand your setup. P5 Archive can save data to disk, tape and the cloud, while the same hardware is used by P5 Backup

Offsite Storage

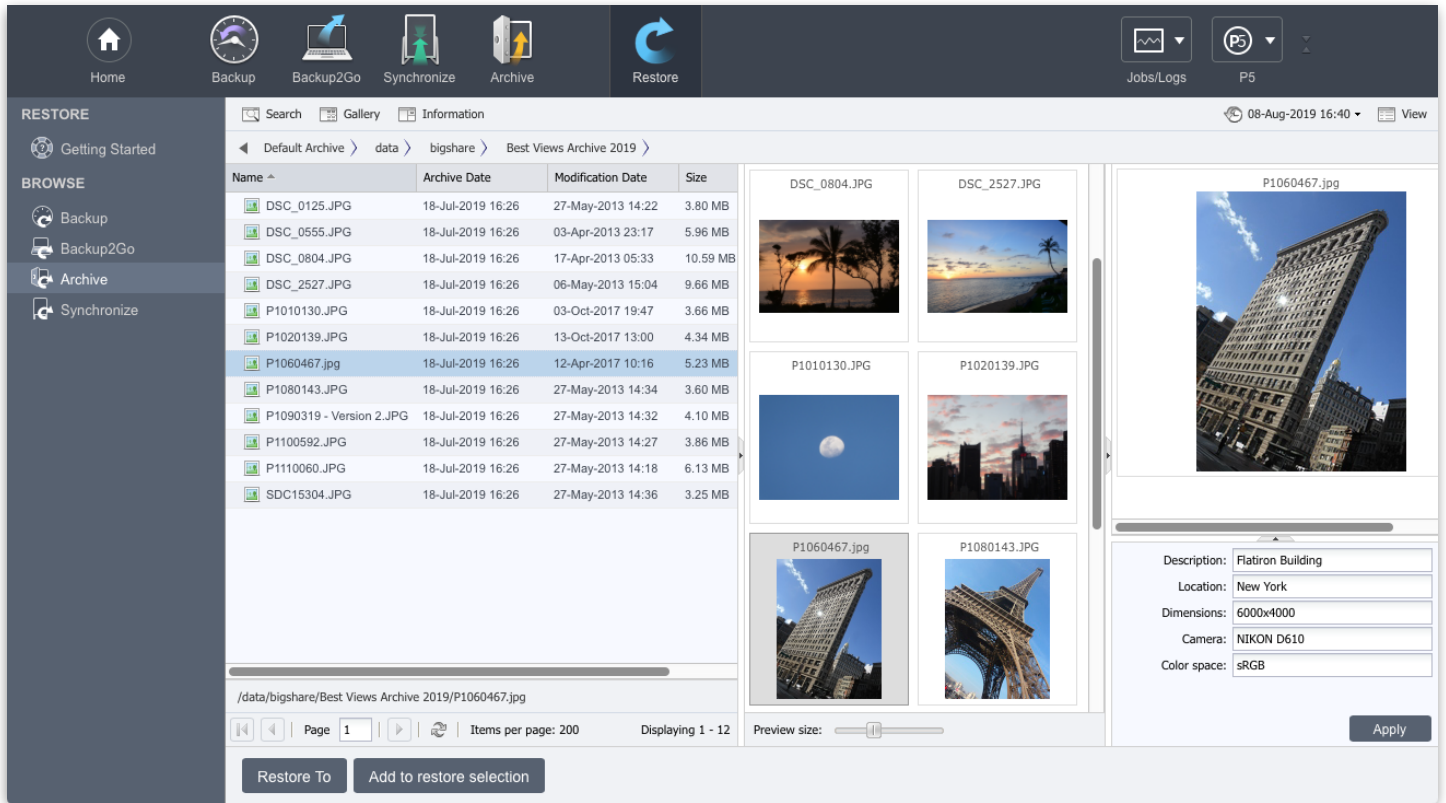
P5 Archive lets you move or migrate data offline to disk, tape and the cloud. You can monitor files, folders and the directory structure to archive files automatically. Fine-grained filtering can be applied to select or exclude files based on name, size, date etc. Data can be cloned to a second tape for offsite storage. Encryption options protect data against non-authorized access both during the transfer and on the media itself.

- Previews & Metadata**
- Browse & Search**
- User Restore**
- Offsite Storage**
- Tape, Disk & Cloud**

Data Archive from the Workstation

Available for all P5 Archive customers, the P5 Companion is a desktop application for Windows, macOS and Linux, allows drag-and-drop archiving from the workstation desktop. Stub files can be created when archiving for ease of restore, without the need to use the P5 web interface.

SOFTWARE HIGHLIGHTS	TECHNICAL FEATURES	OS SERVER & CLIENT	FILE SERVER
<ul style="list-style-type: none"> Migrate server data To disk, tape or the cloud Easy user restore Previews and Metadata Drive parallelization Tape cloning Offsite storage 	<ul style="list-style-type: none"> Data Migration Full of incremental Preview creation User-definable Metadata File Filters/Policies Restore between platforms 	<ul style="list-style-type: none"> macOS Windows Linux FreeBSD Synology QNAP NETGEAR 	<ul style="list-style-type: none"> ExtremeZ-IP Helios Xinet Netatalk



Basic Media Asset Management

P5's archiving software can function as a bare bones asset management. Features include extendable metadata fields, HTML5 previews and an automatic backup of Archive indexes for search and retrieval. Search file types like images and videos by visual previews. P5 Archive provides configurable login areas for restricted or direct access to (selected) parts of the archive to browse, search and restore files.

Incremental Archive

Data can also be archived in incremental mode. This way, only new and changed files will be archived, effectively minimizing the growth of the Archive.

LTFS Import/Export

The Linear Tape File System (LTFS) allows files to be stored on LTO tape and be accessed in a similar fashion to those on disk or removable flash drives. P5 mounts, reads and writes to LTFS formatted tapes using the P5 user interface with no additional software or drivers.

3rd Party Integrations

P5's scriptable command line interface and REST-based API offer unlimited options for 3rd party integrations: FocalPoint Server, CatDV, CANTEMO Portal™, Metus, empress eMAM, medialoopster, Strawberry by Projective, Primestream FORK, DALIM ES, Xinet, Helios, Canto Cumulus.

OPERATING SYSTEM REQUIREMENTS

macOS X	Intel x86 (64-bit): OSX 10.9 – 14.x Apple M1: OSX 11.x – 14.x
Windows	Server 2012R2, 2016, 2019, 2022 Windows 8.1, 10, 11
Linux	Intel/AMD x86 64-Bit systems with glibc version 2.15 are supported, including: OpenSuSE 12.2+ /SLES 12+, CentOS 7+/RHEL 7+/Fedora 19+, Ubuntu 12+, Debian 8+
FreeBSD	Version 13, 14 (Intel/AMD x86 64-Bit CPU)
Synology	DSM operating system 5.2+ - 7.0+ (Intel/AMD x86 64-Bit)
QNAP	QTS Operation System 4.3.0+, QTS hero, QTScloud (Intel x86 64-Bit)
NETGEAR	ReadyNAS OS 6.6.0+ (Intel/AMD x86 64-bit)
Virtualization	x86 – VMware, Parallels, Linux-Xen, Hyper-V

HARDWARE REQUIREMENTS

Memory	2 GB+
Hard Drive	1 GB for installation + variable (for backup/archive indexes)

BROWSER REQUIREMENTS

Safari	13+
Firefox	70+
Chrome	80+