

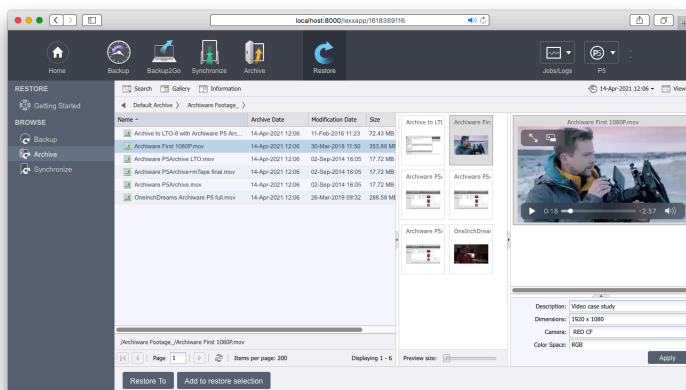
Protect Valuable Video Content with Archiware & Wasabi Back up to Wasabi's competitive, affordable, fast-performing storage cloud

More media content is being generated faster than ever by professional studios, social creators, enterprises, educators and others. With the overriding need to get content to market quickly and under budget, every content creator needs a robust and cost-effective backup/DR strategy to protect from local failures and disasters that result in content loss. Wasabi hot cloud storage and Archiware P5 provide a quick and cost-effective solution to back up or archive digital content to a highly secure, off-premise cloud location.

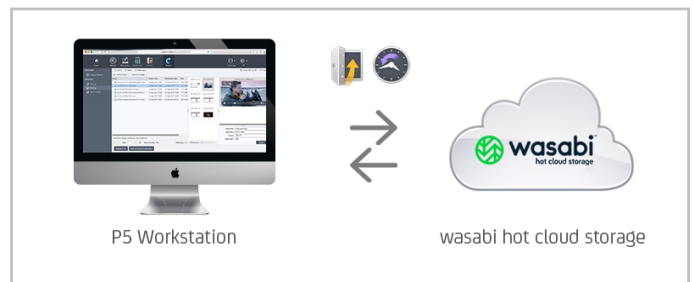
Wasabi hot cloud storage offers extremely affordable and high-performing Cloud storage service available across fifteen global storage locations. Wasabi has a base price of \$6.99US/TB/mo and has no charges for API calls or data egress. A data restore from the Wasabi cloud has no egress penalty to get content back. Wasabi is engineered for 99.999999999% (11 x 9s) data durability and 99.99% service availability and also supports data immutability via object locking to protect content against accidental deletions, malicious attacks, ransomware and viruses.

Archiware P5 is a platform-agnostic software suite for archiving, backup and cloning of data. The browser-based software comprises four modules, which use different methods to secure and restore data. Archiware P5's professional backup and archive functionalities are compatible with numerous Cloud services.

P5 Backup ensures that large data sets are backed up in the shortest time possible. **P5 Archive** is a long-term storage solution for data migration.



The P5 Archive metadata and preview catalogue allows users to easily find and retrieve media files, such as images and videos



P5 Archive and P5 Backup to Wasabi hot cloud storage

P5 Backup and **P5 Archive** quickly copy or move data to **Wasabi** for durable protection at the lowest-possible cost. Backed up or archived data is first saved to local disk-based volumes, which are then backed up or archived to Cloud storage. Individual parts of the volume can be copied or downloaded, without the need to restore the entire volume as a whole. The local disk-based volumes can either be deleted automatically, or kept as a separate local copy to speed up restores. For a rapid restore, Wasabi provides immediate access to archived or backed up content.

Advantages of the Wasabi/P5 Solution:

- ✓ Runs on all platforms (Mac, Win, Linux, Free BSD)
- ✓ One browser interface for all modules
- ✓ Automated archiving + data migration
- ✓ Accelerated backup and recovery cycles
- ✓ Ultra-low-cost Cloud backup and recovery
- ✓ Long-term data storage in the Cloud
- ✓ Simple, one-click restore
- ✓ No external server involvement

Options, Configurations, Interfaces...

We are happy to advise:

www.wasabi.com
www.archiware.com

sales@wasabi.com
sales@archiware.com

