

## CloudSoda and Archiware P5

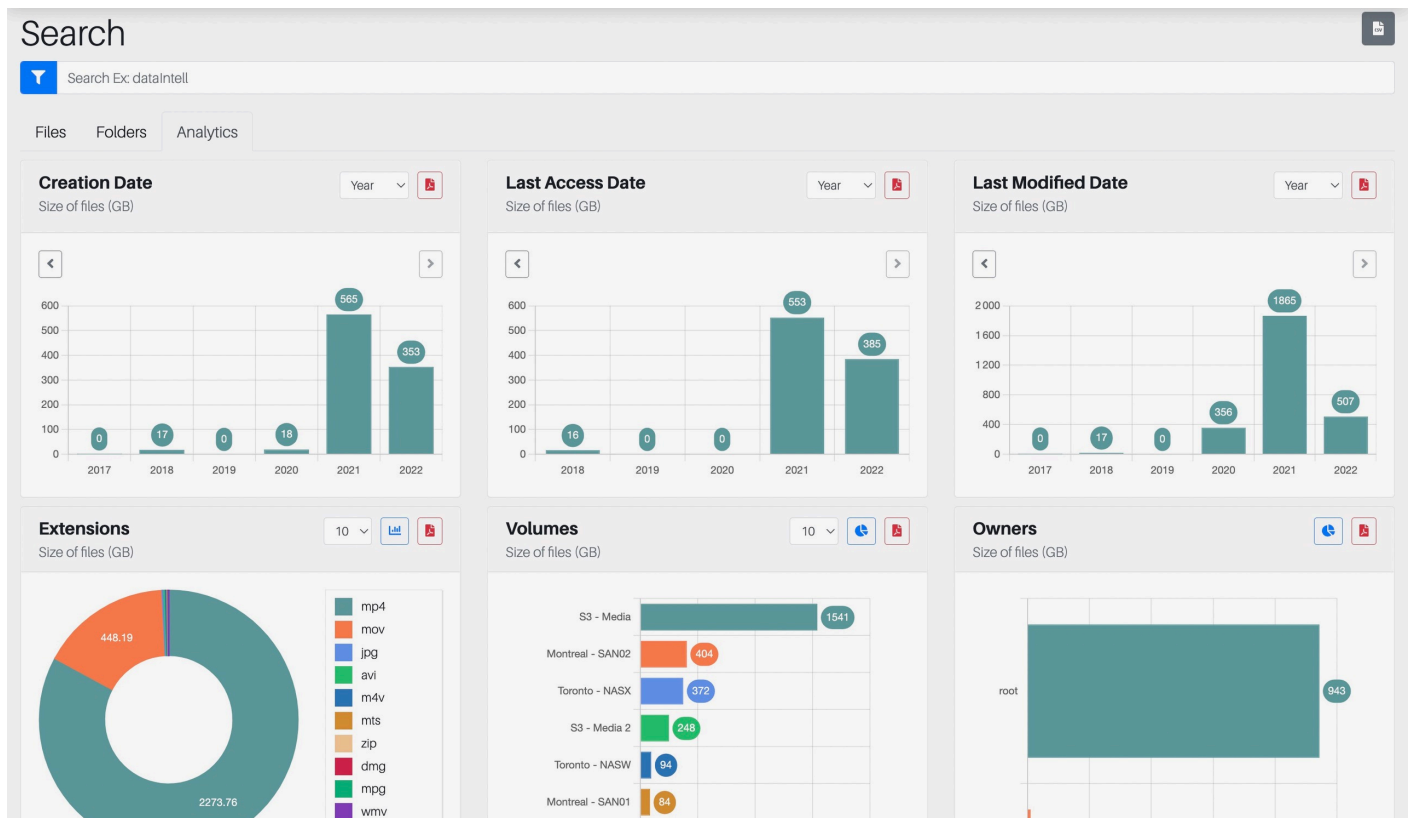
### See what's on your storage, discover patterns, take control

To run today's production workflow, several categories of storage are needed. The range goes from fast production storage, lower tier and shared storage, long-term archive, to cold storage and cloud. These different kinds are spread out over several devices by multiple vendors with multiple interfaces. Some might be on desks, some rack-mount, some remote, or even in data centres in the cloud. For this reason, it can be called storage landscape. But what happens on these storage devices? How does this change over time? And what cost is incurred?



**Archiware P5** already offers some insight into the storage used for Backup and Archive with its overview interface. But what happens on the production storage, on the NAS systems, the SAN, the RAID's and the cloud storage? This is where CloudSoda comes into play and offers an elegant and comprehensive insight into the present state and dynamics over time. Whether it's the file count, the total size or the growth over time, CloudSoda displays all information in detail in the browser. With its P5 Archive integration, it even displays data about the Archive storage used by P5 Archive.

To control cost, **CloudSoda** offers calculation of the cost of any storage, allowing the user to track expenses and adjust accordingly. A scan for duplicate files shows the potential to delete files and free up space. Files that have not been touched in month, "cold data", can and should be moved to the Archive. Files and directories that are spread over several storage devices can be tracked as a project: something that has been near impossible before.



#### Options, Configurations, Interfaces...

We are happy to advise: [www.cloudsoda.io](http://www.cloudsoda.io)  
[www.archiware.com](http://www.archiware.com)

[sales@cloudsoda.io](mailto:sales@cloudsoda.io)  
[sales@archiware.com](mailto:sales@archiware.com)

